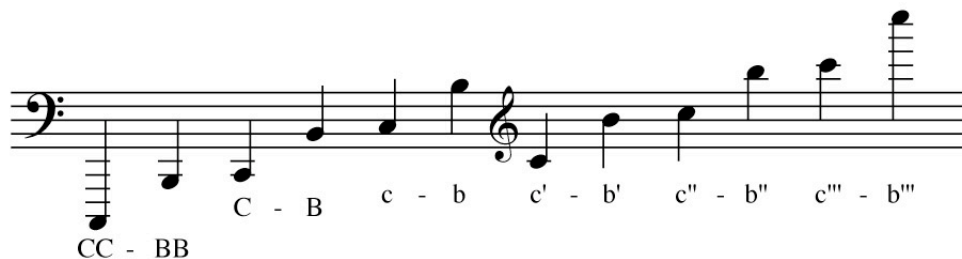


HUBBARD HARPSICHORDS INCORPORATED

Pitch names



These are the conventions we use in specifying the range of our instruments. Please note that we assume that the central C on the keyboard will be named c' with any octave transpositions indicated by the modifiers 4' or 16'. This allows us, for example, to specify the ottavino's range as C-c''' at 4' pitch even though the actual pitches (taken as frequencies) exhibit the range c-c''''.